



Welcome to Johnson Controls

Our passion is to build smarter, healthier
and more sustainable tomorrows.

Our Commitment to Sustainability



Sustainability

Provide increasingly sustainable products and services
Use life-cycle design on **25% of high-impact products**



People

Build communities and make a difference
Volunteer 2.5 million hours on 20,000 projects,
furthering the United Nations Sustainable
Development Goals



Partnerships

Lead in global sustainability partnerships
Increase our impact by leading in at least
three global partnerships



Performance

Improve how we perform From a 2017 baseline:

25% reduction
for energy and
greenhouse
gas intensity

10% reduction
for water use
at stressed
locations

25% of
manufacturing
locations
landfill-free

10% reduction
in recordable
safety
incidents

Increase diverse
supplier spend at
a rate exceeding
revenue growth



Governance

Demonstrate our commitment from the top
Continue integration of sustainability into company
goals and decision-making



140 Years
of innovation experience

150 countries offering
a local service from
2000 locations



100,000+ Experts globally



4+ million
Customers globally



40+

Named in 40+ leading
sustainability indices

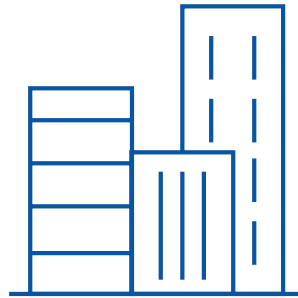


more than

8,700

Active Patents

We are in **90%**
of the world's most
iconic buildings



Delivering outcomes in
Smart Buildings
Smart Cities
Data Centers
Healthcare
Higher Education
K-12
Entertainment
Transportation

\$78 million



in charitable contributions
in the past **5 years**

Over **\$3.9** billion
Energy savings



and more than
\$2.1 billion
Operational savings



We have delivered over
26M Metric tonnes
of **CO₂ reduction**



316,000+
Volunteers Hours

We dedicate 100% of our efforts to the success of your mission to deliver outcomes that matter

 Airports	 Commercial Real Estate
 Data Centers	 Food & Beverages
 Government	 Healthcare
 Hospitality	 Industrial & Manufacturing
 Life Sciences	 Marine and Navy
 Oil & Gas	 Retail
 Rail & Metro	 Schools & Higher Education
 Smart Cities	 Sports & Entertainment

Why you should trust in Johnson Controls



IoT Innovator of the Year



Best AI Application of the Year



Commercial Real Estate Digital Innovation Award



"Change the World" List



Over **140** years of innovation experience



More than **8,700** active patents

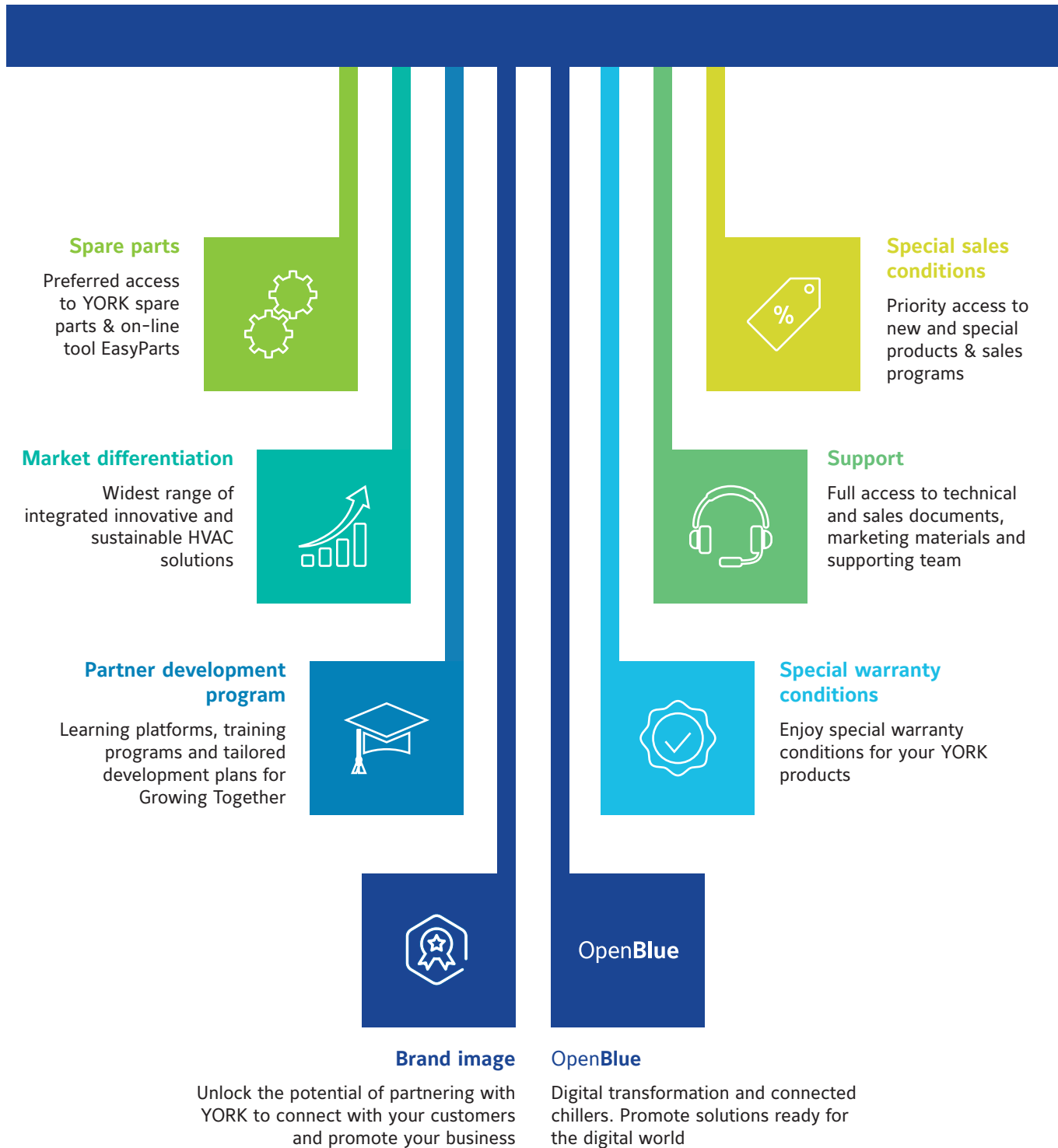


We are in **90%** of the world's most iconic buildings



More than **4 million** customers globally

Value Proposition



YORK MORE THAN 150 YEARS OF POWERING INNOVATION

Since our start in 1874, we've been steadily improving the quality of life by focusing on heating, ventilation, air-conditioning, & refrigeration technology. Look behind the scenes. In homes, office buildings, schools, sports venues, factories, hospitals, & skyscrapers you'll see YORK products are making a vital difference.

Modern medicine uses sophisticated YORK process cooling systems to maintain quality in pharmaceutical manufacturing. Clean rooms where computer components are fabricated require sophisticated YORK filtration and air handling technology. In general industry, products that were previously made in relatively uncontrolled environments are now being specified for manufacturing in a

1871-1900

1874 - YORK Manufacturing Company formed by six investors.



1884



1892



1900



1901-1930

1901 - YORK plant



1901-1910



1927 - YORK Manufacturing Company merges with its field (sales) companies and three companies that sold collateral products to form the YORK® Ice Machinery Corporation.

1931-1950

1931



1936 - Exhibit



1942 - YORK Ice Machinery Corporation changes name to YORK Corporation since ice machines were no longer the company's main product line.

1951-1960

1956 - YORK Corporation is acquired by Borg-Warner Corporation and becomes a subsidiary known as the YORK Division of Borg-Warner.



1959 - YORK Jack Paar



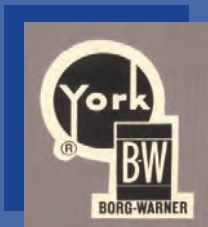
controlled climate. Our refrigeration technology for food preservation, storage, processing, and distribution has helped boost food production beyond expectations. Wherever you go in cities, campuses, and communities around the globe, YORK air conditioning is making life more productive and pleasant.

And thanks to the dedication and expertise of YORK employees, suppliers, distributors, representatives, and dealers, we're building on our innovation leadership. We are a premier company that promises to make the future look cooler than ever.

For more information on YORK products and capabilities, visit www.york.com

1961-1980

1956-1961

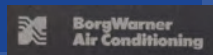


1970-1983



1981-1990

1984 - YORK Division of Borg-Warner renamed Borg-Warner Air Conditioning, Inc., a wholly owned subsidiary of Borg-Warner Corporation.



1986 - YORK International Corporation is spun off as an independent company as the Borg-Warner Air Conditioning, Inc. ceases to exist.

1990-2005 - "Sunflake" symbolizes the company's leadership in heating, cooling and refrigeration.



1991-2000

1996 - YORK historical firsts list



1999 - YORK 125th Anniversary



2001 - TODAY

2005 - YORK holds the title of largest independent manufacturer of air conditioning, heating and refrigeration machinery. In this same year, YORK is acquired by Johnson Controls.

2014 - YORK joins Building Homes for Heroes® to donate quality residential heating and cooling systems to veterans injured in the Iraq or Afghanistan Wars.

2015 - New product platform launched, enhancing system performance, increasing comfort and delivering peace of mind.

2016



Today - YORK products can be found in the U.S. Capitol, Sydney Opera House and English Channel.

A complete range of HVAC solutions for your facilities

YORK CHILLERS

AIR-COOLED



YVAG

Cooling capacity: 11.2 - 40.0 kW / 3.2 - 11.4 TR
DC Inverter technology, rotary compressor, R410A



YMAE

Cooling capacity: 45 - 65 kW / 12.8 - 18.5 TR
DC Inverter technology, EVI scroll compressor, R410A



YMAA

Cooling capacity: 44 - 255 kW / 12.5 - 72.5 TR
DC Inverter technology, Scroll compressor, hydro kit, R410A



YCAE-X

Cooling Capacity: 65 - 136 kW / 18.5 - 38.7 TR
Modular chiller scroll compressor, R410A



YLAA

Cooling Capacity: 180 - 530 kW / 51.2 - 150.7 TR
Scroll compressors, R410A



YSAA-B

Cooling capacity: 385 kW - 1600 kW / 110 - 455 TR
Screw compressor, R134a



YVAA

Cooling capacity: 525 - 1750 kW / 149.3 - 497.6 TR
Variable-speed screw compressor, R134a



YVAA-B

Cooling capacity: 648 - 2000 kW / 180 - 575 TR
Variable-speed screw compressor, R1234ze and R513A



YVFA

Cooling capacity: 400 - 1340 kW / 113.7 - 381 TR
Air-Cooled VSD Screw Free Cooling, R134a



YVAM

Cooling Capacity: 1225 - 1700 kW / 350 - 475 TR
Magnetic Bearing Centrifugal VSD, R1234ze

WATER-COOLED



YCWE

Cooling capacity: 76.2 - 151.9 kW / 21.6 - 43.2 TR
Scroll compressor, R410A



YGWS

Cooling capacity: 350.4 - 1150 kW / 99.6 - 327 TR
Screw compressor, R134a



YGWE

Cooling capacity: 350 - 1500 kW / 99.5 - 426.5 TR
Screw compressor, R134a



YGWH

Cooling capacity: 400 - 1320 kW / 113.7 - 375.3 TR
Screw compressor, R134a



YVWE

Cooling capacity: 360.5 - 1502 kW / 102.5 - 427 TR
Variable-speed screw compressor, R134a



YVWH

Cooling capacity: 400 - 1550 kW / 113.7 - 440.7 TR
Variable-speed screw compressor, R134a



YZ

Cooling capacity: 580 - 4740 kW / 165 - 1348 TR
Variable Speed Centrifugal, Magnetic Bearings, R1233zd(E)



YMC²

Cooling capacity: 580 - 3520 kW / 164.9 - 1000.9 TR
Variable Speed Centrifugal, Magnetic Bearings, R134a, R513A



YK

Cooling capacity: 3095 - 37110 kW / 880 - 10550 TR
Centrifugal compressor, R134a, R513A and R1234ze



YK-R8

Cooling capacity: 9671 kW / 2750 TR
Variable frequency drive centrifugal compressor, R-1234ze, R515B and R513A



YK-CP

Cooling capacity: 10550 kW / 3000 TR
Centrifugal with Economizer design, R1234ze, R134a

YORK CHILLERS

WATER-COOLED



YL

Cooling capacity: 45 - 140 kW / 12.8 - 40 TR
2-stage centrifugal compressor design for high-lift applications, 5°C LWT to 55°C LCT, R134a



YMS

Cooling capacity: 250 TR
Magnetic Bearing Centrifugal, R134a



CYK

Cooling capacity: 1050 - 8800 kW / 299 - 2502 TR
Compound centrifugal compressor, R134a, R513A

YORK HEAT PUMPS

AIR-COOLED



YVAG

Heating capacity: 12.6 - 42 kW / 3.6 - 11.9 TR
DC Inverter Technology Rotary and Scroll Compressor, R410A



YMAE

Reversible, water up to 60°C
Heating capacity: 46 - 145 kW / 13.1 - 41.2 TR
DC Inverter technology, EVI scroll compressor, R410A



YCAE-X

Heating Capacity: 66 - 132 kW / 18.8 - 37.5 TR
Modular system, scroll compressor, R410A



YMPA

Reversible, water up to 55°C
Heating capacity: 45 - 255 kW / 12.8 - 72.5 TR
DC Inverter Technology Scroll Compressor, R410A



YLPB

Reversible, water up to 52°C
Heating capacity: 345 - 650 kW / 98 - 185 TR
Scroll compressors, R410A



YLPA

Reversible, water up to 55°C
Heating capacity: 351 - 666 kW / 99.8 - 189.4 TR
Scroll compressors, hydro kit, R410A

WATER-COOLED

CUSTOM-DESIGNED CENTRIFUGAL (OM)

Electric-motor, steam-turbine or gas-engine drive, R134a



YCWE

Heating capacity: 90.6 - 180.6 kW / 25.8 - 51.4 TR
Scroll compressor, R410A



YMC² HP

Water up to 65°C
Heating capacity: 1600 - 3000 kW / 455 - 853 TR
Variable Speed Centrifugal, Magnetic Bearings, R134a, R513A



YK

Water up to 50°C (Std) / 70°C (HP)
Heating capacity: Contact a chiller rep.
Centrifugal compressor, R134a, R513A, R1234ze



YD

Heating capacity: Contact a chiller rep.
Centrifugal compressor, R134a and R513A



CYK

Heating capacity: Contact a chiller rep.
Centrifugal compressor, R134a and R513A

THERMALLY DRIVEN

YST

Steam-Turbine Driven
Centrifugal compressor, R-134a

ABSORPTION SINGLE STAGE

YHAP-C

Hot Water Leaving up to 95°C
Heating capacity: 900 - 40000 kW / 256 - 11373 TR
Steam, Gas or Hot Water driven, R718 (Natural Water)

YORK ABSORPTION CHILLERS R718 (Natural-Water)



**SINGLE EFFECT HOT WATER
YHAU-CL/CH**
Cooling capacity:
105 - 7034 kW / 30 - 2000 TR



**SINGLE EFFECT STEAM DRIVEN
YHAU-C**
Cooling capacity:
105 - 7034 kW / 30 - 2000 TR



**DOUBLE EFFECT STEAM
YHAU-CW/CHW**
Cooling capacity:
422 - 14067 kW / 120 - 4000 TR



**DOUBLE EFFECT NATURAL GAS
AND/OR DIESEL
YHAU-CG/CA**
Cooling capacity:
422 - 5626 kW / 120 - 1600 TR



**DOUBLE EFFECT EXHAUST GAS
YHAU-CE**
Cooling capacity:
527 - 5064 kW / 150 - 1440 TR



**MULTI ENERGY
Exhaust and Jacket Hot Water
YHAU-CE-J**
Cooling capacity:
527 - 5064 kW / 150 - 1440 TR



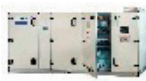
YORK AIR HANDLING UNITS & INDOOR AIR QUALITY OPTIONS



YMA
Customized AHU
Airflow range:
900 - 180000 m³/h / 530 - 105945 CFM



YSM-P
Modular AHU
Airflow range:
1200 - 99180 m³/h / 706 - 58376 CFM



YMZ
Modular AHU
Airflow range:
1000 - 100000 m³/h / 589 - 58860 CFM



YORK UVC LAMPS
YORK Germicidal Ultraviolet Emitters for
AHUs/FCUs

YORK ROOFTOP EQUIPMENT



ACTIVA ROOFTOP
Cooling capacity: 18 - 39 kW / 5 - 11 TR
Cooling only, Heat pump, Cooling only + Gas heat,
Heat pump + Gas heat, Scroll compressor, R410A



DEH STELLAR
Cooling capacity: 10.5 to 98.5 kW / 3 - 28 TR
Scroll compressor, R410A



DEM AMAZON
Cooling capacity: 70.3 to 123 kW / 20 to 30 TR
Scroll compressor, R410A



LARGE ACTIVA ROOFTOP
Cooling capacity: 108 - 169 kW / 31 - 48 TR
Cooling only, Heat pump, Scroll compressors, R410A



YORK CLOSE CONTROL AC UNITS



YC-P / YC-G / YC-R SERIES
Cooling capacity: 1.5 - 182 kW / 0.4 - 51.8 TR
Chilled water option
R410A option Inverter compressors and EC fans. Upflow,
downflow and horizontal supply options



YC-H SERIES
Cooling capacity: 32 - 141 kW / 9 - 40 TR
Chilled water and R410A options, EC fans, brushless DC com-
pressors, Plug & Play integrated controls



YC-W SERIES
Airflow range:
25485 - 101940 m³/h / 15000 - 60000 CFM
Cooling capacity: 100 - 500 kW / 28 - 142 TR
Cooling media: Water
EC fans, integrated controls

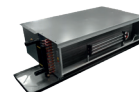


YMA Cold Wall
Customized, compact fan walls units
Airflow range: 16990 - 101940 m³/h / 10000 - 60000 CFM
Cooling capacity: 75 - 470 kW / 21 - 134 TR
EC fans, integrated controls

YORK FAN COIL UNITS



YGFC AC/DC
Medium Static Fan Coil Units
Cooling capacity: 1.5 - 16.5 kW / 0.4 - 4.7 TR



YDFC AC/DC
High Static Fan Coil Units
Cooling capacity: 1.9 - 21.2 kW / 0.5 - 6.0 TR



JCDFCU
Ductable Unit
Cooling capacity: 7.0 - 26.4 kW / 2.0 - 7.5 TR



YAH AC/DC
High Static Pressure Blower Unit
Cooling capacity: 3.0 - 250 kW / 0.8 - 71.1 TR



JCCT
One Way / Four Way / Compact Cassette
Cooling capacity: 3.3 - 12.6 kW / .8 - 4.5 TR



JCHI
High-Wall Unit
Cooling capacity: 2.8 - 7.0 kW / 0.8 - 2 TR



JCRCT
Round Cassette
Cooling capacity: 4.5 - 10.8 kW / 1.3 - 3.1 TR



Heat Recovery Option



Low GWP

Solution Navigator

We are with you all the way.

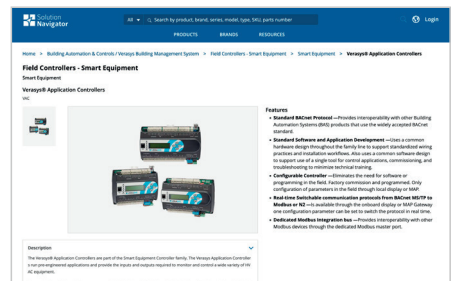
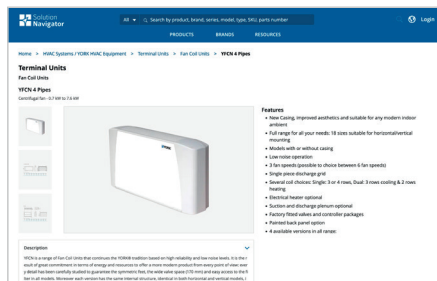
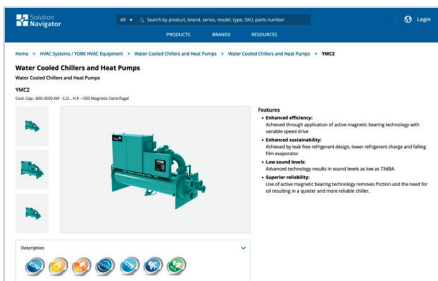
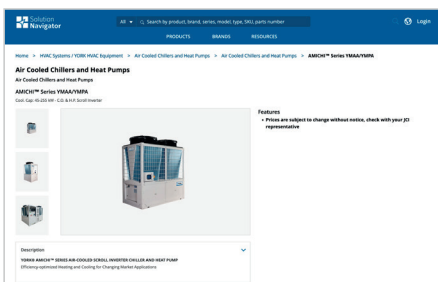
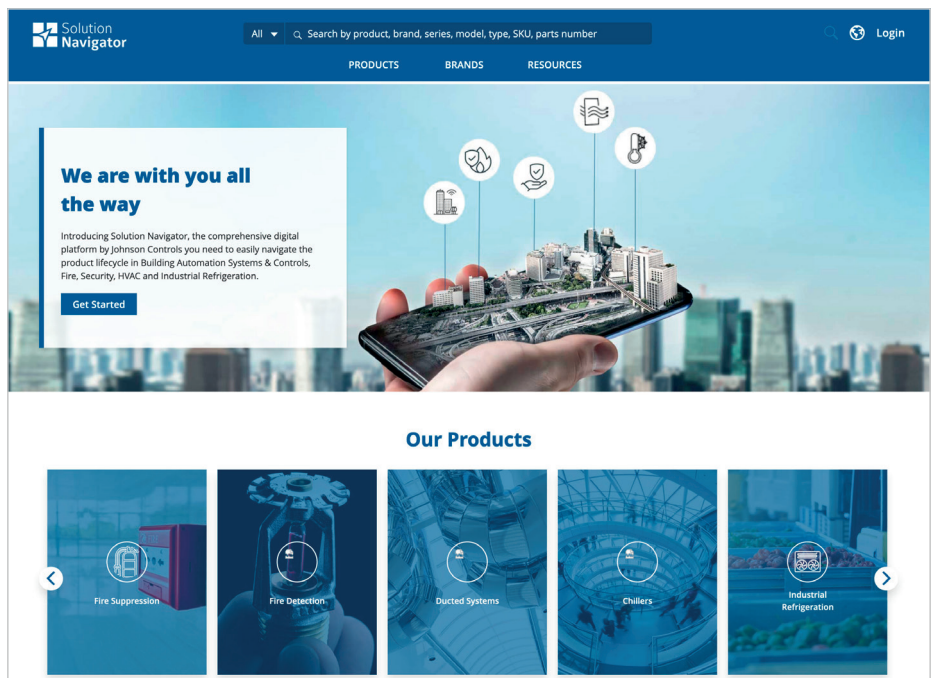
After interviewing more than 100 customers to gather a deep insight into their needs, we understood how vital it was to transform our web portal, Virtual Branch, into a digital customer-enablement platform in motion.

This led to us launching Solution Navigator, the comprehensive digital platform by Johnson Controls you need to easily navigate the product lifecycle in HVAC, Industrial Refrigeration, Building Automation Systems & Controls, Fire and Security. This powerful customer portal improves channel partner productivity, provides value-added services and enhances communications to strengthen our customers' footholds and development in the marketplace.

Through this portal, customers can accomplish fundamental tasks, such as ordering products, managing warranties and getting installation guidance, while enjoying a consistent, outstanding experience.

Call your Sales Representative and request access now.

<https://www.solutionnavigator.com/>



Fast-forward to today and we are delighted to share with you the evolution of this self-serve solution. Tuning in, once again, to customer feedback, we've gone further - much further.



HVAC Applied/IR combined Global Factory Footprint

Best-in-class products from around the World

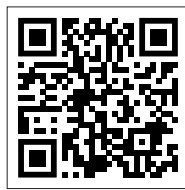
- ① Albany, MO, USA
Standard Air Handlers
- ② Hattiesburg, MS, USA
Custom Air Handlers
- ③ San Antonio, TX, USA
Large Tonnage Chillers/HP
- ④ Salem, VA, USA
Magnetic Bearings
- ⑤ York, PA, USA
Standard & Custom Air Handlers
- ⑥ New Freedom, PA, USA
Applied JADEC Engineering Center
- ⑦ Waynesboro, PA, USA
IR Frick/YORK products
IR Engineering Center
- ⑧ Federalsburg, MD, USA
IR M&M products
- ⑨ Trois Riviers, QC, Canada
IR M&M products
IR Engineering Center
- ⑩ Edmonton, AL, Canada
Silent-Aire products
- ⑪ Durango, Mexico
Heat Exchangers (Feeder)
- ⑫ Monterrey, Mexico
Stiva - Small Tonnage Chillers/HP
Cienega - Compressors (Feeder)
- ⑬ Holme, Denmark
IR Sabroe products
IR Engineering Center
- ⑭ FMF, Hungary
Vessels (Feeder)
Applied/IR
- ⑮ Nantes, France
Large Tonnage Chillers/HP
IR HP
IR/Applied Engineering Center
- ⑯ Dublin, Ireland
Silent-Aire products
- ⑰ Izmir, Turkey
Small Tonnage Chillers/HP
Mini-chillers
- ⑱ Jeddah, KSA (JV)
Small Tonnage Chillers
Air Handlers
- ⑲ Pune, India
Large Tonnage Chillers
Small Tonnage Chillers
- ⑳ Tianjin, China
Air Handlers
- ㉑ Wuxi, China
Large Tonnage Chillers/HP
Compressors
IR YORK products
Applied/IR Engineering Center
- ㉒ Guangzhou, China
Mini-chillers, Small Tonnage
Chillers/HP
Fan Coil Units, Air Handlers
- ㉓ Shah Alam, Malaysia
Air Handlers, Fan Coil Units
- ㉔ Phoenix, AZ, USA
Silent-Aire products
- ㉕ Sorocaba, Brazil
IR Frick/Sabroe products



Chillers/HP Related Products
 Airside Related Products
 IR Products
 Engineering Center
 Hyperscale Cooling / Modular Data Center Solutions

The power behind **your mission**

Scan the QR-code



<https://www.johnsoncontrols.in/contact-us>

About Johnson Controls:

At Johnson Controls (NYSE:JCI), we transform the environments where people live, work, learn and play. As the global leader in smart, healthy and sustainable buildings, our mission is to reimagine the performance of buildings to serve people, places and the planet.

Building on a proud history of 140 years of innovation, we deliver the blueprint of the future for industries such as healthcare, schools, data centers, airports, stadiums, manufacturing and beyond through OpenBlue, our comprehensive digital offering.

Today, Johnson Controls offers the world's largest portfolio of building technology and software as well as service solutions from some of the most trusted names in the industry.

About YORK:

As part of Johnson Controls, YORK is a global leader in designing and manufacturing innovative HVAC solutions. Known for its reliability and energy efficiency, YORK provides state-of-the-art chillers, heat pumps, air handling units, fan coils, and HVAC systems tailored to meet the needs of various industries, including commercial buildings, data centers, healthcare, and industrial applications.

With a proud history dating back to its founding in 1874, YORK brings 150 years of expertise to delivering cutting-edge HVAC solutions. With a focus on sustainability, YORK products are engineered to optimize performance while minimizing environmental impact, aligning with Johnson Controls' mission to create smart, healthy, and sustainable buildings.